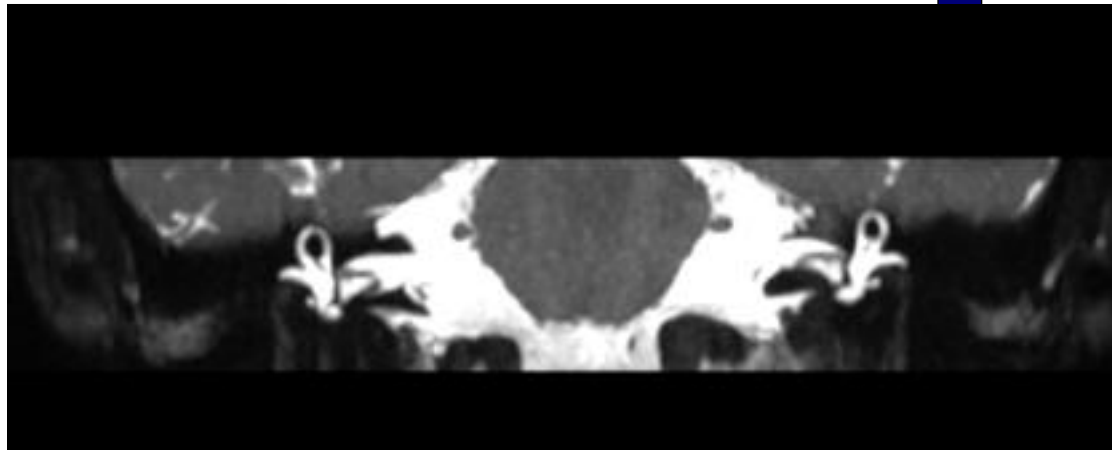


Protocol: adult_head_BRAIN IACS

PATIENT POSITION	
Patient Entry	Head First
Patient Position	Supine
Coil Configuration	GEM Head
Plane	3-PLANE
Series Description	3-Plane Localizer
SCAN TIMING	
TE	Minimum
Number of Echoes	1
TR	Minimum
Receiver Bandwidth	83.33
IMAGE ENHANCE	
Filter Choice	None
GATING/TRIGGER	
Auto Trigger Type	Off
FMRI	
PSD Trigger	Internal
View Order	Bottom/Up
# of Repetitions REST	0
# of Repetitions ACTIVE	0
SAT	
Tag Type	None
TRICKS	
Pause On/Off	On
Auto Subtract	0
Auto SCIC	Off
OTHERS	

IMAGING PARAMETERS	
Imaging Mode	2D
Pulse Sequence	Spin Echo
Imaging Options	Seq, EDR, TRF, Fast, SS, FR, ARC
SCAN RANGE	
FOV	24.0
Slice Thickness	10.0
Slice Spacing	5.0
ACQ TIMING	
Freq	288
Phase	128
Freq DIR	Unswap
# of Acq. Before Pause	0
Phase FOV	1.00
Auto Shim	Auto
Phase Correction	No
USER CVS	
User CV1	1.00
MULTI-PHASE	
Seperate Series	0
Mask Phase	0
Mask Pause	0
DIFFUSION	
Recon All Images	On
CONTRAST	
Contrast Yes/No	No

Protocol Notes



if can visualize complete
semicircular canals don't
run FIESTA

3-Plane Localizer

3-Plane Localizer

Protocol: adult_head_BRAIN IACS

PATIENT POSITION		IMAGING PARAMETERS	
Patient Entry	Head First	Imaging Mode	2D
Patient Position	Supine	Pulse Sequence	Spin Echo
Coil Configuration	GEM Head	Imaging Options	NPW, EDR, ARC
Plane	OBLIQUE	SCAN RANGE	
Series Description	SAGITTAL T1W	FOV	22.0
SCAN TIMING		Slice Thickness	5.0
TE	Min Full	Slice Spacing	1.0
Number of Echoes	1	ACQ TIMING	
TR	450.0	Freq	320
Receiver Bandwidth	41.67	Phase	192
IMAGE ENHANCE		Freq DIR	S/I
Filter Choice	None	NEX	2.00
GATING/TRIGGER		Auto Shim	Auto
Auto Trigger Type	Off	Phase Correction	No
FMRI		USER CVS	
PSD Trigger	Internal	User CV4	1.00
View Order	Bottom/Up	TR Min	400.0
# of Repetitions REST	0	TR Max	600.0
# of Repetitions ACTIVE	0	MULTI-PHASE	
SAT		Seperate Series	0
Tag Type	None	Mask Phase	0
TRICKS		Mask Pause	0
Pause On/Off	On	DIFFUSION	
Auto Subtract	0	Recon All Images	On
Auto SCIC	2	CONTRAST	
		Contrast Yes/No	No

SAGITTAL T1W

SAGITTAL T1W

Protocol: adult_head_BRAIN IACS

PATIENT POSITION		IMAGING PARAMETERS	
Patient Entry	Head First	Imaging Mode	3D
Patient Position	Supine	Pulse Sequence	Cube
Coil Configuration	GEM Head	Imaging Options	FC, EDR, Fast, ZIP512, ZIP2, FR, ARC
Plane	OBLIQUE		
Series Description	3D Ax T2 Cube FS		
SCAN TIMING		SCAN RANGE	
TE	155.0	FOV	18.0
Number of Echoes	1	Slice Thickness	0.8
TR	1700.0	Location per Slab	52
Echo Train Length	130	Overlap Locations	0
Receiver Bandwidth	31.25		
IMAGE ENHANCE		ACQ TIMING	
Filter Choice	None	Freq	256
		Phase	256
		Freq DIR	A/P
		NEX	4.00
		Phase FOV	1.00
		Auto Shim	Auto
		Phase Correction	No
		Flow Direction	Slice
		Compensation	
GATING/TRIGGER		USER CVS	
Auto Trigger Type	Off	User CV5	1.00
		User CV22	2.00
FMRI		MULTI-PHASE	
PSD Trigger	Internal	Seperate Series	0
View Order	Bottom/Up	Mask Phase	0
# of Repetitions REST	0	Mask Pause	0
# of Repetitions ACTIVE	0		
SAT		DIFFUSION	
Tag Type	None	Recon All Images	On
Fat/Water Saturation	Fat		
TRICKS		CONTRAST	
Pause On/Off	On	Contrast Yes/No	No
Auto Subtract	0		
Auto SCIC	2		

3D Ax T2 Cube FS

3D Ax T2 Cube FS

Protocol: adult_head_BRAIN IACS

PATIENT POSITION		IMAGING PARAMETERS	
Patient Entry	Head First	Imaging Mode	2D
Patient Position	Supine	Pulse Sequence	FSE-XL
Coil Configuration	GEM Head	Imaging Options	FC, EDR, TRF, Fast, ARC, T2flair
Plane	OBLIQUE		
Series Description	AXIAL T2W FLAIR		
SCAN TIMING		SCAN RANGE	
Flip Angle	160	FOV	22.0
TE	140.0	Slice Thickness	5.0
Number of Echoes	1	Slice Spacing	1.0
TR	8800.0		
TI	2546	ACQ TIMING	
Echo Train Length	20	Freq	320
Receiver Bandwidth	31.25	Phase	192
IMAGE ENHANCE		Freq DIR	A/P
Filter Choice	None	Fat Shift DIR	Normal (A)
GATING/TRIGGER		NEX	1.00
Auto Trigger Type	Off	Phase FOV	1.00
FMRI		Auto Shim	Auto
PSD Trigger	Internal	Phase Correction	No
View Order	Bottom/Up	Flow Direction	Slice
# of Repetitions REST	0	Compensation	
# of Repetitions ACTIVE	0	USER CVS	
SAT		User CV18	1.00
Tag Type	None	MULTI-PHASE	
TRICKS		Seperate Series	0
Pause On/Off	On	Mask Phase	0
Auto Subtract	0	Mask Pause	0
Auto SCIC	2	DIFFUSION	
		Recon All Images	On
		CONTRAST	
		Contrast Yes/No	No

AXIAL T2W FLAIR

AXIAL T2W FLAIR

Protocol: adult_head_BRAIN IACS

PATIENT POSITION	
Patient Entry	Head First
Patient Position	Supine
Coil Configuration	GEM Head
Plane	OBLIQUE
Series Description	AXIAL FIESTA-C

SCAN TIMING	
Flip Angle	55
TE	Minimum
Number of Echoes	1
Receiver Bandwidth	41.67

IMAGE ENHANCE	
Filter Choice	None

GATING/TRIGGER	
Auto Trigger Type	Off

FMRI	
PSD Trigger	Internal
View Order	Bottom/Up
# of Repetitions REST	0
# of Repetitions ACTIVE	0

SAT	
Tag Type	None

TRICKS	
Pause On/Off	On
Auto Subtract	0
Auto SCIC	2

OTHERS

Protocol Notes *If the cube has complete closure of the semicircular canals don't need to run FIESTA.*

IMAGING PARAMETERS	
Imaging Mode	3D
Pulse Sequence	Fiesta-C
Imaging Options	NPW, EDR, Fast, ZIP512, ZIP2, ARC

SCAN RANGE	
FOV	18.0
Slice Thickness	0.8
Location per Slab	80
Overlap Locations	0

ACQ TIMING	
Freq	256
Phase	256
Freq DIR	A/P
NEX	2.00
Auto Shim	Auto
Phase Correction	No

USER CVS	
User CV16	8.00

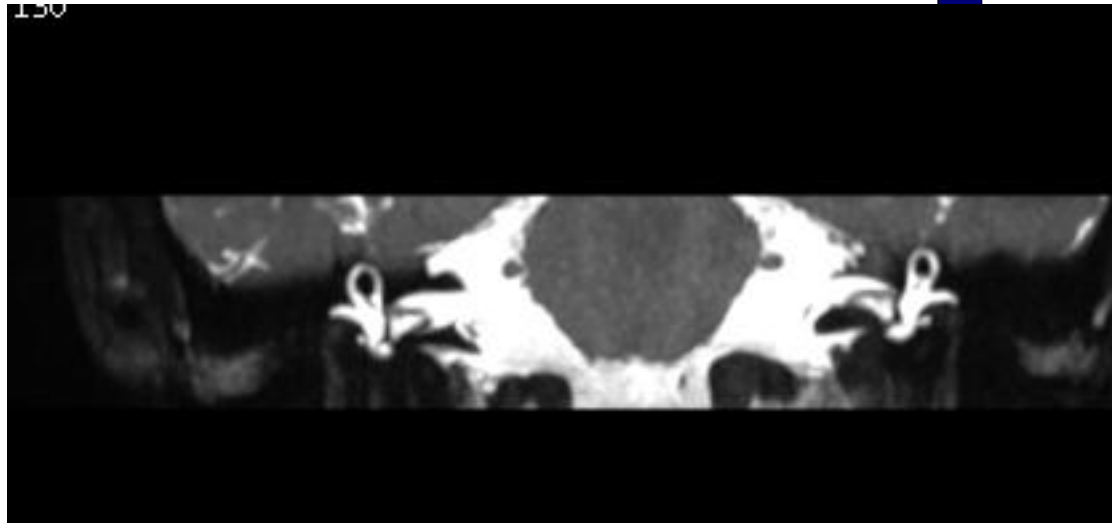
MULTI-PHASE	
Seperate Series	0
Mask Phase	0
Mask Pause	0

DIFFUSION	
Recon All Images	On

CONTRAST	
Contrast Yes/No	No

AXIAL FIESTA-C

AXIAL FIESTA-C



Protocol: adult_head_BRAIN IACS

PATIENT POSITION		IMAGING PARAMETERS	
Patient Entry	Head First	Imaging Mode	2D
Patient Position	Supine	Pulse Sequence	FSE-XL
Coil Configuration	GEM Head	Imaging Options	FC, EDR, TRF, Fast, FR
Plane	OBLIQUE	SCAN RANGE	
Series Description	AXIAL T2W	FOV	22.0
SCAN TIMING		Slice Thickness	5.0
Flip Angle	160	Slice Spacing	1.0
TE	105.0	ACQ TIMING	
Number of Echoes	1	Freq	352
TR	5092.0	Phase	256
Echo Train Length	19	Freq DIR	A/P
Receiver Bandwidth	41.67	Fat Shift DIR	Normal (A)
IMAGE ENHANCE		NEX	2.00
Filter Choice	None	Phase FOV	1.00
GATING/TRIGGER		Auto Shim	Auto
Auto Trigger Type	Off	Phase Correction	No
FMRI		Flow Direction Compensation	Slice
PSD Trigger	Internal	USER CVS	
View Order	Bottom/Up	User CV18	1.00
# of Repetitions REST	0	User CV22	1.00
# of Repetitions ACTIVE	0	TR Min	2500.0
SAT		TR Max	11000.0
SAT Location	I	MULTI-PHASE	
Tag Type	None	Seperate Series	0
TRICKS		Mask Phase	0
Pause On/Off	On	Mask Pause	0
Auto Subtract	0	DIFFUSION	
Auto SCIC	2	Recon All Images	On
		CONTRAST	
		Contrast Yes/No	No

AXIAL T2W

AXIAL T2W

Protocol: adult_head_BRAIN IACS

PATIENT POSITION		IMAGING PARAMETERS	
Patient Entry	Head First	Imaging Mode	3D
Patient Position	Supine	Pulse Sequence	SWAN
Coil Configuration	GEM Head	Imaging Options	FC, Fast, ZIP512, ZIP2, Asset
Plane	OBLIQUE		
Series Description	3D AX SWAN		
SCAN TIMING		SCAN RANGE	
Flip Angle	25	FOV	24.0
TE	50.0	Slice Thickness	2.6
Number of Echoes	8	Location per Slab	56
TR	Minimum	Overlap Locations	0
Receiver Bandwidth	35.71		
IMAGE ENHANCE		ACQ TIMING	
Filter Choice	None	Freq	320
		Phase	192
GATING/TRIGGER		Freq DIR	A/P
Auto Trigger Type	Off	Phase FOV	0.75
		Auto Shim	Auto
FMRI		Phase Correction	No
PSD Trigger	Internal	USER CVS	
View Order	Bottom/Up	User CV22	1.00
# of Repetitions REST	0	MULTI-PHASE	
# of Repetitions ACTIVE	0	Seperate Series	0
SAT		Mask Phase	0
Tag Type	None	Mask Pause	0
TRICKS		DIFFUSION	
Pause On/Off	On	Recon All Images	On
Auto Subtract	0	CONTRAST	
Auto SCIC	Off	Contrast Yes/No	No

3D AX SWAN

3D AX SWAN

Protocol: adult_head_BRAIN IACS

PATIENT POSITION		IMAGING PARAMETERS	
Patient Entry	Head First	Imaging Mode	2D
Patient Position	Supine	Pulse Sequence	Spin Echo
Coil Configuration	GEM Head	Imaging Options	EPI, DIFF, Asset
Plane	OBLIQUE	SCAN RANGE	
Series Description	Ax DWI ALL B-1000	FOV	24.0
SCAN TIMING		Slice Thickness	5.0
TE	Minimum	Slice Spacing	1.0
Number of Echoes	1	ACQ TIMING	
TR	9400.0	Freq	160
Number of Shots	1	Phase	192
IMAGE ENHANCE		Freq DIR	R/L
Filter Choice	None	Phase FOV	1.00
GATING/TRIGGER		Auto Shim	Auto
Auto Trigger Type	Off	Phase Correction	Yes
FMRI		USER CVS	
PSD Trigger	Internal	User CV0	1.00
View Order	Bottom/Up	User CV5	1.00
# of Repetitions REST	0	User CV7	1.00
# of Repetitions ACTIVE	0	User CV17	1.00
SAT		MULTI-PHASE	
Tag Type	None	Seperate Series	0
TRICKS		Mask Phase	0
Pause On/Off	On	Mask Pause	0
Auto Subtract	0	DIFFUSION	
Auto SCIC	2	Optimized TE	Yes
		Diffusion Directions	All
		Number of Diffusion Directions	3
		Number of T2 Images	1
		Dual Spin Echo	Off
		Recon All Images	On
		CONTRAST	
		Contrast Yes/No	No

Ax DWI ALL B-1000

Ax DWI ALL B-1000

Protocol: adult_head_BRAIN IACS

AXIAL T1W PRE GAD FSE	PATIENT POSITION		IMAGING PARAMETERS	
	Patient Entry	Head First	Imaging Mode	2D
	Patient Position	Supine	Pulse Sequence	FSE-XL
	Coil Configuration	GEM Head	Imaging Options	EDR, TRF, Fast, ZIP512, ARC
	Plane	OBLIQUE	SCAN RANGE	
	Series Description	AXIAL T1W PRE GAD FSE	FOV	20.0
	SCAN TIMING		Slice Thickness	2.0
	Flip Angle	160	Slice Spacing	0.0
	TE	Min Full	ACQ TIMING	
	Number of Echoes	1	Freq	256
	TR	681.0	Phase	192
	Echo Train Length	3	Freq DIR	A/P
	Receiver Bandwidth	22.73	Fat Shift DIR	Normal (A)
	IMAGE ENHANCE		NEX	4.00
	Filter Choice	None	Phase FOV	1.00
	GATING/TRIGGER		Auto Shim	Auto
	Auto Trigger Type	Off	Phase Correction	No
	FMRI		USER CVS	
	PSD Trigger	Internal	TR Min	300.0
	View Order	Bottom/Up	TR Max	750.0
	# of Repetitions REST	0	MULTI-PHASE	
	# of Repetitions ACTIVE	0	Seperate Series	0
	SAT		Mask Phase	0
	Tag Type	None	Mask Pause	0
	TRICKS		DIFFUSION	
	Pause On/Off	On	Recon All Images	On
	Auto Subtract	0	CONTRAST	
	Auto SCIC	2	Contrast Yes/No	No

AXIAL T1W PRE GAD FSE

Protocol: adult_head_BRAIN IACS

PATIENT POSITION		IMAGING PARAMETERS	
Patient Entry	Head First	Imaging Mode	2D
Patient Position	Supine	Pulse Sequence	Spin Echo
Coil Configuration	GEM Head	Imaging Options	Seq, EDR, TRF, Fast, SS, ARC
Plane	3-PLANE		
Series Description	---Contrast---		
SCAN TIMING		SCAN RANGE	
TE	80.0	FOV	24.0
Number of Echoes	1	Slice Thickness	10.0
TR	600.0	Slice Spacing	5.0
Receiver Bandwidth	83.33		
IMAGE ENHANCE		ACQ TIMING	
Filter Choice	None	Freq	288
		Phase	128
		Freq DIR	Unswap
		# of Acq. Before Pause	0
		Phase FOV	1.00
		Auto Shim	Auto
		Phase Correction	No
GATING/TRIGGER		USER CVS	
Auto Trigger Type	Off	User CV1	1.00
FMRI		MULTI-PHASE	
PSD Trigger	Internal	Seperate Series	0
View Order	Bottom/Up	Mask Phase	0
# of Repetitions REST	0	Mask Pause	0
# of Repetitions ACTIVE	0		
SAT		DIFFUSION	
Tag Type	None	Recon All Images	On
TRICKS		CONTRAST	
Pause On/Off	On	Contrast Yes/No	No
Auto Subtract	0		
Auto SCIC	Off		

Protocol: adult_head_BRAIN IACS

AXIAL T1W POST GAD FAT SAT FSE	PATIENT POSITION		IMAGING PARAMETERS	
	Patient Entry	Head First	Imaging Mode	2D
	Patient Position	Supine	Pulse Sequence	FSE-XL
	Coil Configuration	GEM Head	Imaging Options	EDR, TRF, Fast, ZIP512, ARC
	Plane	OBLIQUE	SCAN RANGE	
	Series Description	AXIAL T1W POST GAD FAT SAT FSE	FOV	20.0
	SCAN TIMING		Slice Thickness	2.0
	Flip Angle	160	Slice Spacing	0.0
	TE	Min Full	ACQ TIMING	
	Number of Echoes	1	Freq	256
	TR	410.0	Phase	192
	Echo Train Length	4	Freq DIR	A/P
	Receiver Bandwidth	31.25	Fat Shift DIR	Normal (A)
	IMAGE ENHANCE		NEX	4.00
	Filter Choice	None	# of Acq. Before Pause	0
	GATING/TRIGGER		Phase FOV	1.00
	Auto Trigger Type	Off	Auto Shim	Auto
	FMRI		Phase Correction	No
	PSD Trigger	Internal	USER CVS	
	View Order	Bottom/Up	User CV19	1.00
	# of Repetitions REST	0	TR Min	400.0
	# of Repetitions ACTIVE	0	TR Max	600.0
	SAT		MULTI-PHASE	
	Tag Type	None	Seperate Series	0
	Fat/Water Saturation	Fat	Mask Phase	0
TRICKS		Mask Pause	0	
Pause On/Off	On	DIFFUSION		
Auto Subtract	0	Recon All Images	On	
Auto SCIC	2	CONTRAST		
		Contrast Yes/No	Yes	

AXIAL T1W POST GAD FAT SAT FSE

Protocol: adult_head_BRAIN IACS

CORONAL T1W POST GAD FAT SAT FSE	PATIENT POSITION		IMAGING PARAMETERS	
	Patient Entry	Head First	Imaging Mode	2D
	Patient Position	Supine	Pulse Sequence	FSE-XL
	Coil Configuration	GEM Head	Imaging Options	EDR, TRF, Fast, ZIP512, ARC
	Plane	OBLIQUE	SCAN RANGE	
	Series Description	CORONAL T1W POST GAD FAT SAT FSE	FOV	20.0
	SCAN TIMING		Slice Thickness	2.0
	Flip Angle	160	Slice Spacing	0.0
	TE	Min Full	ACQ TIMING	
	Number of Echoes	1	Freq	256
	TR	410.0	Phase	192
	Echo Train Length	4	Freq DIR	S/I
	Receiver Bandwidth	31.25	Fat Shift DIR	Normal (I)
	IMAGE ENHANCE		NEX	4.00
	Filter Choice	None	# of Acq. Before Pause	0
	GATING/TRIGGER		Phase FOV	1.00
	Auto Trigger Type	Off	Auto Shim	Auto
	FMRI		Phase Correction	No
	PSD Trigger	Internal	USER CVS	
	View Order	Bottom/Up	User CV19	1.00
# of Repetitions REST	0	TR Min	400.0	
# of Repetitions ACTIVE	0	TR Max	600.0	
SAT		MULTI-PHASE		
Tag Type	None	Seperate Series	0	
Fat/Water Saturation	Fat	Mask Phase	0	
TRICKS		Mask Pause	0	
Pause On/Off	On	DIFFUSION		
Auto Subtract	0	Recon All Images	On	
Auto SCIC	2	CONTRAST		
		Contrast Yes/No	Yes	

CORONAL T1W POST GAD FAT SAT FSE

Protocol: adult_head_BRAIN IACS

AXIAL BRAVO POST GAD	PATIENT POSITION		IMAGING PARAMETERS		AXIAL BRAVO POST GAD
	Patient Entry	Head First	Imaging Mode	3D	
	Patient Position	Supine	Pulse Sequence	BRAVO	
	Coil Configuration	GEM Head	Imaging Options	EDR, Fast, ZIP512, ZIP2, ARC, IrP	
	Plane	OBLIQUE	SCAN RANGE		
	Series Description	AXIAL BRAVO POST GAD	FOV	24.0	
	SCAN TIMING		Slice Thickness	1.2	
	Flip Angle	12	Location per Slab	152	
	Number of Echoes	1	Overlap Locations	0	
	TI	450	ACQ TIMING		
	Receiver Bandwidth	31.25	Freq	240	
	IMAGE ENHANCE		Phase	240	
	Filter Choice	None	Freq DIR	Unswap	
	GATING/TRIGGER		NEX	1.00	
	Auto Trigger Type	Off	Phase FOV	1.00	
	MULTI-PHASE		Auto Shim	Auto	
	Seperate Series	0	Phase Correction	No	
	Trigger Delay without AV	0	FMRI		
	Mask Phase	0	PSD Trigger	Internal	
	Mask Pause	0	View Order	Bottom/Up	
	DIFFUSION		# of Repetitions REST	0	
	Recon All Images	On	# of Repetitions ACTIVE	0	
	CONTRAST		SAT		
	Contrast Yes/No	Yes	Tag Type	None	
			TRICKS		
		Pause On/Off	On		
		Auto Subtract	0		
		Auto SCIC	2		